

## READ ME !

Thank you for purchasing a Front Runner Toyota Land Cruiser Prado 250 / Lexus GX550 (2024-Current) Ladder.  
Before you start, take a moment to familiarize yourself with the Fitting Instructions and the included components.  
Refer to Page 2 for a list of all the components, quantities and tools required.

## IMPORTANT WARNING!

IT IS CRITICAL THAT ALL FRONT RUNNER PRODUCTS BE PROPERLY AND SECURELY ASSEMBLED AND ATTACHED TO YOUR VEHICLE. IMPROPER ATTACHMENT COULD RESULT IN AN AUTOMOBILE ACCIDENT, AND COULD CAUSE SERIOUS BODILY INJURY OR DEATH. YOU ARE RESPONSIBLE FOR ASSEMBLING AND SECURING ALL FRONT RUNNER PRODUCTS TO YOUR VEHICLE, CHECKING THE ATTACHMENTS PRIOR TO USE, AND PERIODICALLY INSPECTING THE PRODUCTS FOR ADJUSTMENT, WEAR AND DAMAGE. THEREFORE, YOU MUST READ AND UNDERSTAND ALL OF THE INSTRUCTIONS AND PRECAUTIONS SUPPLIED WITH YOUR FRONT RUNNER PRODUCT PRIOR TO INSTALLATION OR USE. IF YOU DO NOT UNDERSTAND ALL OF THE INSTRUCTIONS AND CAUTIONS, OR IF YOU HAVE NO MECHANICAL EXPERIENCE AND ARE NOT THOROUGHLY FAMILIAR WITH THE INSTALLATION PROCEDURES, YOU SHOULD HAVE THE PRODUCT INSTALLED BY A PROFESSIONAL INSTALLER OR OTHER QUALIFIED PERSONNEL.

**NOTE:** Front Runner will not be responsible for any damage caused by the failure to install the product according to these instructions.  
Please call us if you have any questions about the installation of this product.



# 1 GET ORGANIZED

## IN THE BOX

1	1 X	Ladder Top Step Bracket
2	2 X	Upper Side Rail
3	2 X	Outer Joiner Plate
4	2 X	Lower Side Rail
5	2 X	Inner Joiner Plate
6	1 X	Bottom Mount Bracket
7	3 X	Ladder Rung (225mm)
8	2 X	M8 x 35 Button Head Bolt
9	2 X	Aluminum Spacer
10	1 X	Bottom Clamp
11	4 X	M8 x 16 x 1.6 Flat Washer
12	2 X	M8 Nyloc Nut
13	4 X	M8 Nut Cap
14	2 X	M8 x 19 x 2 Flat Washer
15	2 X	Foam Rubber
16	1 X	Lower Mount Plate
17	2 X	M6 x 20 Countersunk Cap Screw
18	14 X	M6 Nyloc Nut
19	1 X	Pinch Weld (210mm Long)

## IN THE BOX

20	12 X	M6 x 16 Button Head Flange Bolt
21	6 X	M6 x 25 Thread Forming Screw
22	2 X	M6 Nut Cap
23	2 X	Top Mounting Bracket; 1 RH & 1 LH
24	2 X	M6 x 12 Hex Bolt
25	2 X	M8 x 19 x 3 Flat Washer
26	2 X	M8 x 25 Hex Bolt

## TOOLS NEEDED

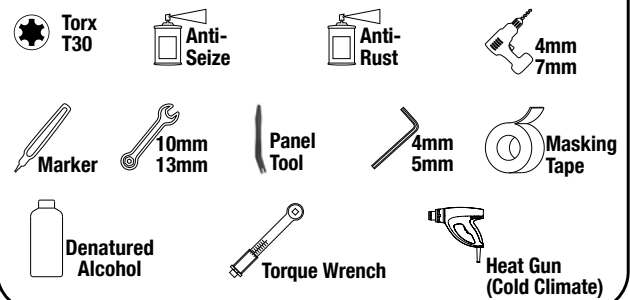
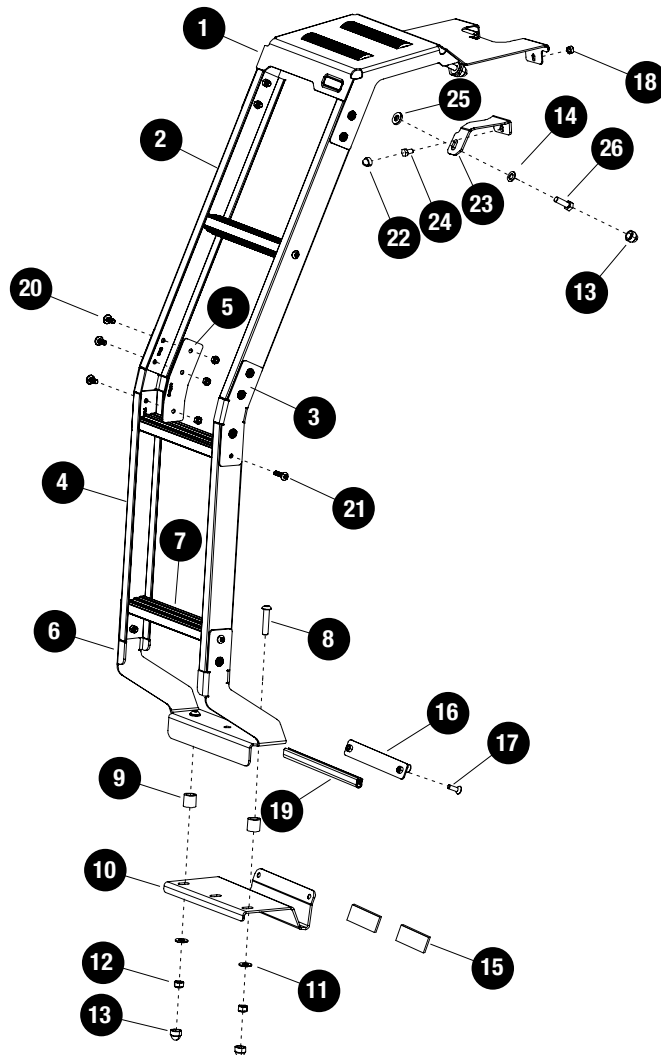


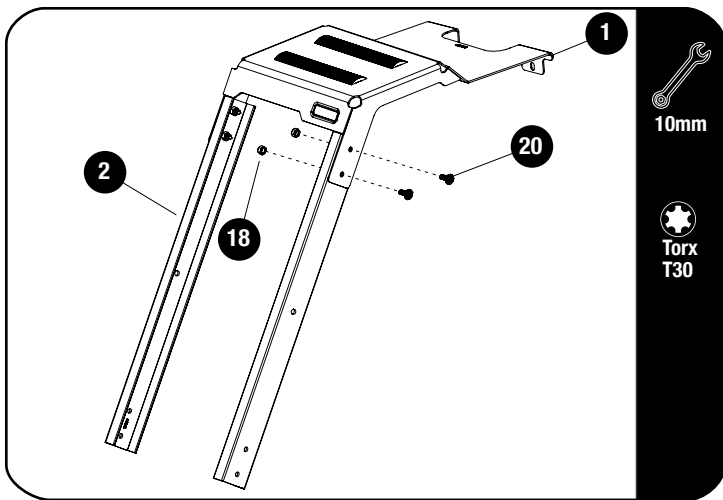
FIGURE 1.1



2

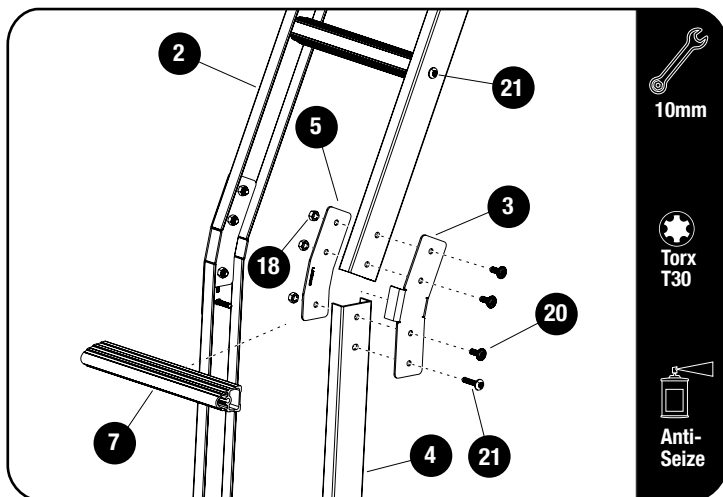
FIT AND SECURE

2.1



Loosely assemble two Upper Side Rails (Item 2) to the Ladder Top Step Bracket (Item 1) using the M6 x 16 Flange Button Head Bolts and M6 Nyloc Nuts (Items 18 & 20).

2.2



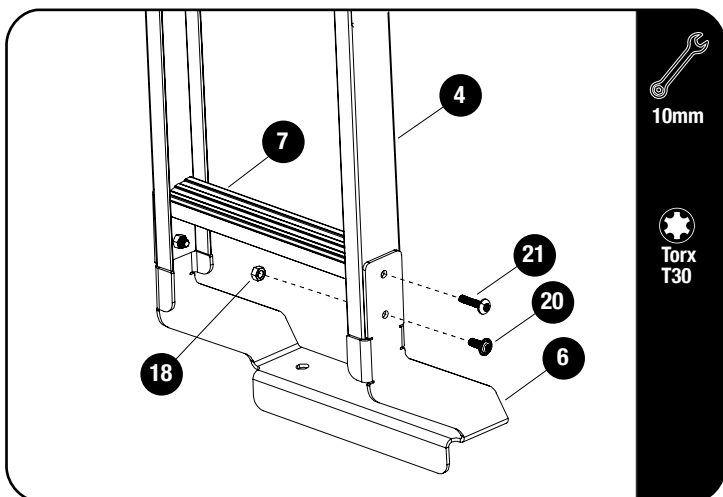
Apply a little Anti Seize / oil on Thread Forming Screws before inserting. Note these are thread forming screws.

Secure the Ladder Rungs (Item 7) to the Upper - and Lower Side Rails (Items 2 & 4) using M6 x 25 Thread Forming Screws (Item 21). Join the Side Profiles with the Outer Joiner Plates and Inner Joiner Plates (Items 3 & 5) using M6 x 16 Flange Button Head Bolts and M6 Nyloc Nuts (Items 20 & 18).

Fully Tighten all Fasteners.

**Tightening Torque:**  
M6 : 8-10Nm / 5.9 ft lb - 7.38 ft lb

2.3



Secure the Bottom Mount Bracket and the last Ladder Rung to the Lower Side Rails (Items 6, 7 & 4) using M6 x 16 Flange Button Head Bolts, M6 Nyloc Nuts & M6 x 25 Thread Forming Screws (Items 20, 18 & 21).

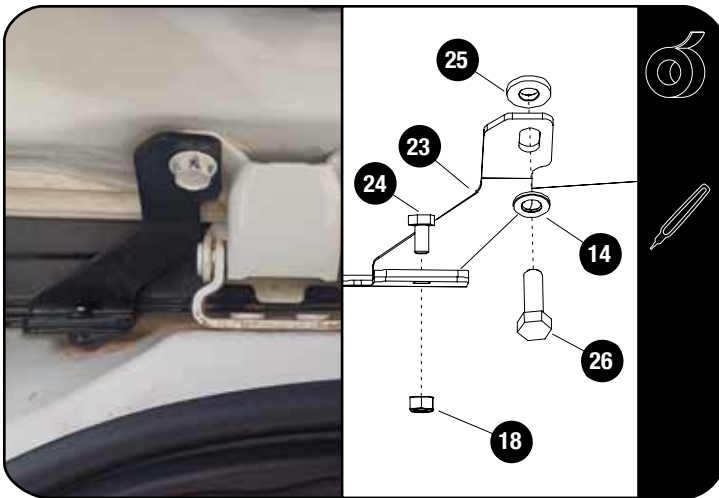
Fully Tighten all Fasteners.

**Tightening Torque:**  
M6 : 8-10Nm / 5.9 ft lb - 7.38 ft lb

2

FIT AND SECURE

2.4



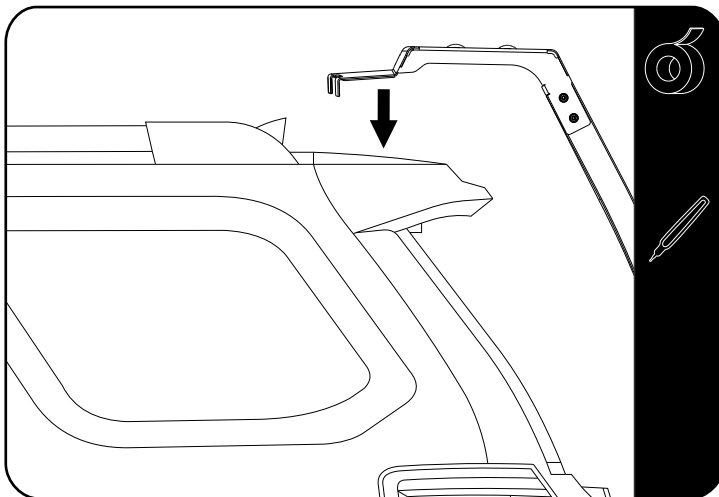
Loosen and remove the left side bolt of the Left Hand OEM Hinge to fit the Top Mounting Bracket (Item 23). This will act as a guide for the placement of the ladder.

Before securing the Top Mount Bracket, place a M8 x 19 x 3mm Washer (Item 25) between the bracket and the hinge. This will act as a spacer.

Secure the Bracket using a M8 x 25 Hex Bolt and M8 x 16 x 1.6 Flat Washer (Items 26 & 14) as shown. Ensure that the bolt goes through both washers.

The right hand sides bracket will be secured in 2.9.

2.5



With the hatch closed place the ladder onto the top of the hatch. Hold firmly in place to prevent it moving and open the hatch to shift and align with hole in left Top Mount Bracket.

Temporary secure in place with one M6x12 Hex Bolt (Item 24) and M6 Nyloc Nut (Item 18).

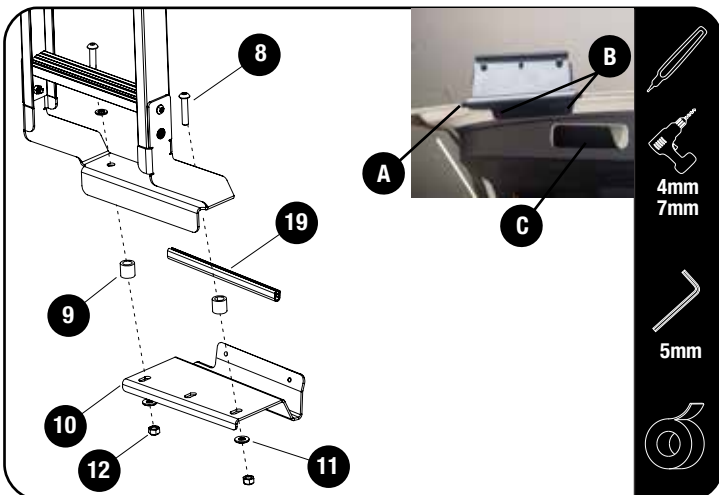


Take note of bolt orientation as shown in 2.4.

**TIP:** Apply a small strip of masking tape to the open end of your 10mm spanner to hold the M6 Nyloc Nut in place while threading the M6 Hex Bolt with your other hand.

Close the hatch and mark the top step position on the top of the hatch by placing a strip of masking tape on the hatch along the top step side edge.

2.6



Before opening the hatch, ensure that the ladder sits vertical on the door looking from the rear. You can use the lights edge as a guide.



Open the hatch and place the Pinch Weld Strip (Item 19) on the bottom edge of the door.

Loosely secure the Bottom Clamp (Item 10) using M8 x 40 Button Head Bolts, M8 x 19 x 2 Flat Washers, Spacers, M8 x 19 x 3 and M8 Nyloc Nuts (Items 8, 11, 9, 14 & 12) as shown.



With the ladder still vertical on the vehicle, mark the two mounting holes positions.

Remove the Ladder assembly and the Bottom Clamp before drilling 4mm pilot holes on the two markings. Open the holes to 7mm.

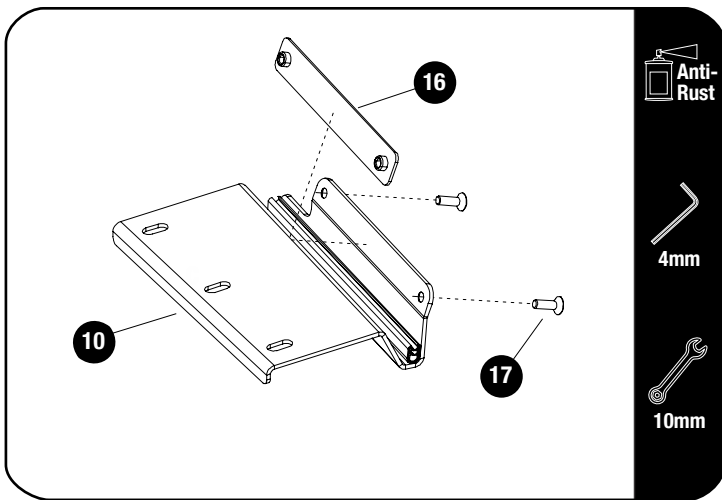


Unclip the plastic door handle.

2

FIT AND SECURE

2.7



Apply anti rust to the holes drilled in 2.6.

Secure the Bottom Clamp (Item 10) to the bottom of the hatch by placing the Lower Mounting Plate (Item 16) through the opening of the door handle

Align the Mounting Plate with the holes drilled in step 2.6. Start with the one closest to the handle opening.

Secure using M6 x 20 Countersunk Cap Screws (Items 17).

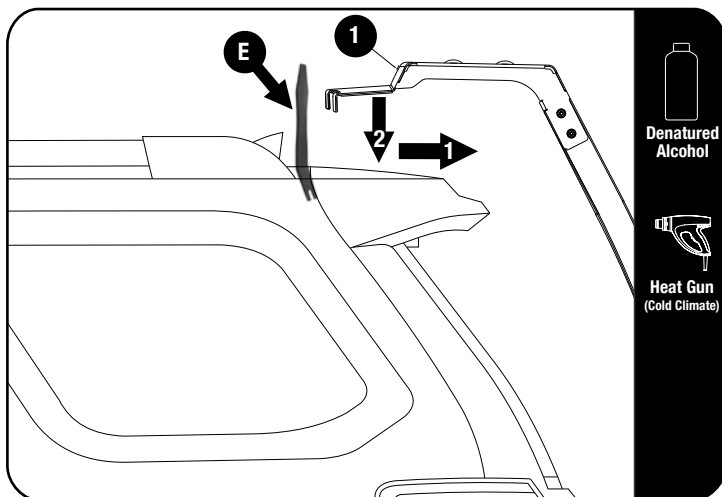
Fully tighten the fasteners.



**Tightening Torque:**

M6 : 8-10Nm / 5.9 ft lb - 7.38 ft lb

2.8



Clean the top area of the hatch with Denatured Alcohol.

Remove the backing of the VHB tape on the underside of the top step and position the ladder with the strip of masking tape from 2.5.



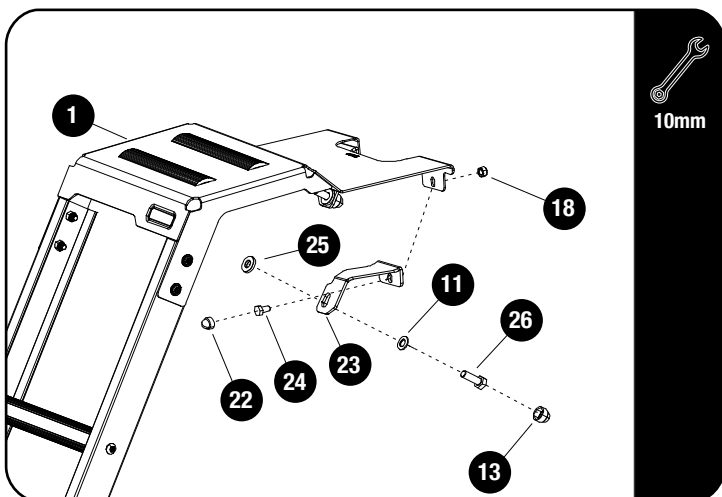
**TIP:** Use a suitable panel tool (E) and wedge it between the ladder top and hatch shut line to ensure the ladder is up against hatch edge.

Slowly lower the Ladder Top Step onto the top of the hatch. Press firmly down when in place.



**Note:** With the backing removed, heat up the self-adhesive tape with a heat gun before fixing it in place. This is especially important in colder climates.

2.9



Secure the right side Top Mounting Bracket to the hinge. Refer to 2.4 for positioning of the fasteners.

Secure the Top Step Bracket (Item 1) to the two Top Mounting Brackets (Item 23) using M6 x 12 Hex Bolts and M6 Nyloc Nuts (Items 24 & 18) as show.

Tighten all Fasteners.

Place Nut Caps (Items (13 & 22)).



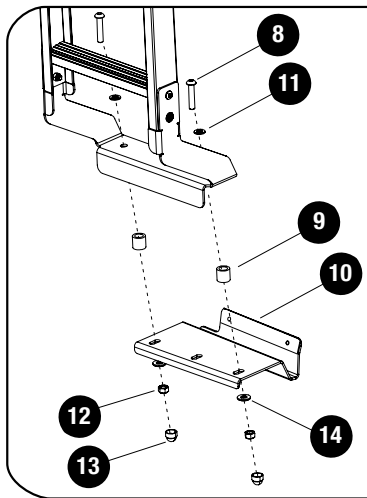
**Tightening Torque:**

M6 : 8-10Nm / 5.9 ft lb - 7.38 ft lb

2

## FIT AND SECURE

2.10



13mm

5mm



Secure the Ladder assembly to the Bottom Clamp (Item 10) using M8 x 40 Button Head Bolts, M8 x 16 x 1.6 Flat Washers, Spacers, M8 x 19 x 3 and M8 Nyloc Nuts (Items 8, 11, 9, 14 & 12) as shown.

Place M8 Nut Caps (Item 13) over the M8 Nyloc Nuts.

Apply the Foam Rubber Strips (Item 15) on each side of the bottom clamp as shown.

This creates a soft edge for the door seal to seal over.



### Tightening Torque:

M8 : 15-20Nm / 11.06 ft lb - 14.75 ft lb

3

## FINISH

Congratulations! You did it. Take a step back and admire your work!

4

## INSTALL OTHER VEHICLE AND RACK ACCESSORIES

Now's the time to visit your favorite Front Runner Dealer in person or online.

Be sure to tag us. We love to see our gear in action! #FrontRunnerOutfitters #BornToRoam

Share your adventures on: 